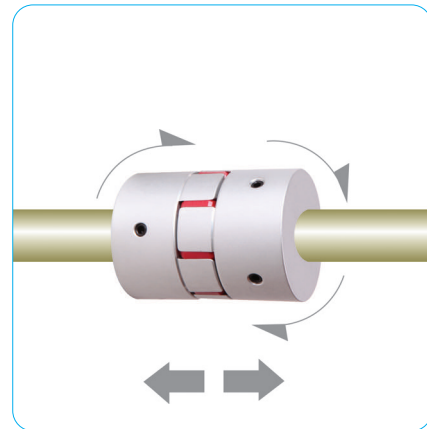
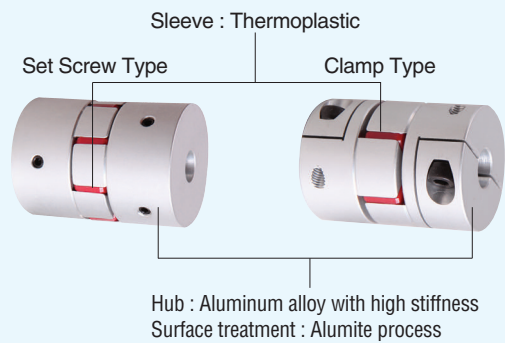




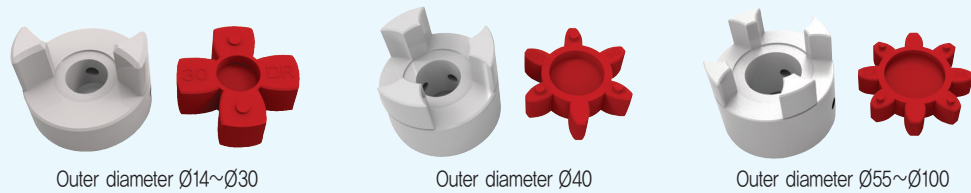
Features

- Unique structure as sleeve is pressed into Both Hub.
- Zero backlash available in low torque.
- Outstanding absorbing eccentricity, declination, Torsional vibration.
- Oil-resistance and electric insulation.
- Forward and reverse are the same.
- Usable temperature : -30°C~90°C
- Various inner diameter for standardization.

Structure & material



Sleeve Design



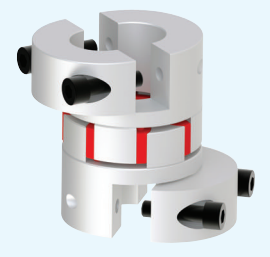
Usage

- Servo motor, - Stepping motor, - General wide use motor, - Encoder

Others

- All products are included set screw and cap screw.
- We can supply nonstandard Inner Diameter and key seat.
- We encourage h7 for tolerance of Inner Diameter.
- You can order DJC with one side is clamp type and another side is Set screw type.
- You can order clamp split type when outer diameter size is over DJCL 30CRD.

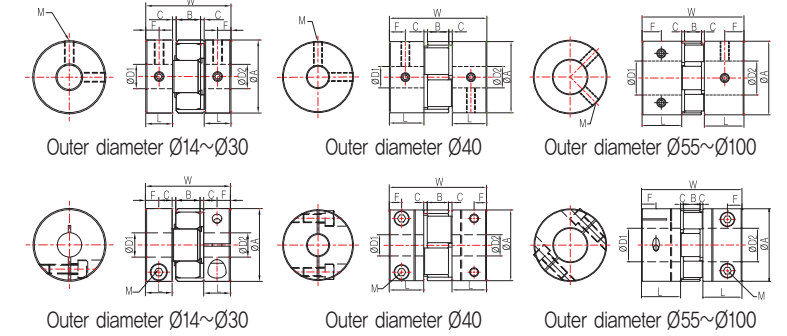
Clamp split type



Set Screw Type



Clamp Type



Product NO.	Dimension(mm)						Tightening Screw		Rated Torque	Max. Torque	Max. RPM	Moment of inertia	Torsional Stiffness	Angle	Parallel	End Play	Mass
	A	L	W	B	C	F	Size	Torque									
DJC-14RD	14	7	22	6	1	3.5	M3	0.7	2	4	45,000	2.1×10 ⁻⁷	30	1	0.1	+0.6 0	7
DJC-20RD	20	10	30	8	1	5	M3	0.7	5	10	31,000	1.0×10 ⁻⁶	65	1	0.1	+0.8 0	18
DJC-25RD	25	10	31.5	9	1.25	5	M4	1.7	10	20	25,000	2.4×10 ⁻⁶	220	1	0.1	+1.0 0	25
DJC-30RD	30	11	35	10	1.5	5.5	M4	1.7	14	28	21,000	5.9×10 ⁻⁶	220	1	0.1	+1.0 0	46
DJCL-30RD	30	15.5	44	10	1.5	7.75	M4	1.7	14	28	20,000	7.2×10 ⁻⁶	220	1	0.1	+1.0 0	53
DJC-40RD	40	19.5	55	12	2	9.75	M5	4	18	36	15,000	3.1×10 ⁻⁵	2,000	1	0.1	+1.0 0	125
DJCL-40RD	40	25	66	12	2	11.5	M5	4	18	36	14,000	4.0×10 ⁻⁵	2,000	1	0.1	+1.0 0	150
DJC-55RD	55	30	78	14	2	15	M6	7	60	120	11,000	1.7×10 ⁻⁴	4,000	1	0.1	+1.4 0	320
DJC-65RD	65	35	90	15	2.5	17.5	M8	15	180	360	9,000	3.9×10 ⁻⁴	8,000	1	0.1	+1.5 0	550
DJC-80RD	80	45	114	18	3	22.5	M8	15	325	650	7,000	1.1×10 ⁻³	20,000	1	0.1	+1.5 0	1,000
DJC-95RD	95	50	126	20	3	25	M8	15	450	900	6,000	2.3×10 ⁻³	30,000	1	0.1	+2.0 0	1,500
DJC-100RD	104	56	140	21	3.5	28	M10	25	600	1,200	6,000	4.8×10 ⁻³	40,000	1	0.1	+2.0 0	2,550
DJC-14CRD	14	7	22	6	1	3.5	M2	0.5	2	4	45,000	1.6×10 ⁻⁷	30	1	0.1	+0.6 0	6
DJC-20CRD	20	10	30	8	1	5	M2.5	1	5	10	31,000	1.1×10 ⁻⁶	65	1	0.1	+0.8 0	19
DJC-25CRD	25	10	31.5	9	1.25	5	M3	2	10	20	25,000	2.4×10 ⁻⁶	220	1	0.1	+1.0 0	25
DJC-30CRD	30	11	35	10	1.5	5.5	M4	4	14	28	21,000	6.2×10 ⁻⁶	220	1	0.1	+1.0 0	50
DJCL-30CRD	30	15.5	44	10	1.5	5.5	M4	4	14	28	20,000	7.5×10 ⁻⁶	220	1	0.1	+1.0 0	55
DJC-40CRD	40	19.5	55	12	2	7	M5	8	18	36	15,000	3.1×10 ⁻⁵	2,000	1	0.1	+1.0 0	135
DJCL-40CRD	40	25	66	12	2	8.5	M5	8	18	36	14,000	3.9×10 ⁻⁵	2,000	1	0.1	+1.0 0	160
DJC-55CRD	55	30	78	14	2	10.5	M6	13	60	120	11,000	1.6×10 ⁻⁴	4,000	1	0.1	+1.4 0	330
DJC-65CRD	65	35	90	15	2.5	13	M8	30	180	360	9,000	3.8×10 ⁻⁴	8,000	1	0.1	+1.5 0	560
DJC-80CRD	80	45	114	18	3	15	M10	50	325	650	7,000	1.1×10 ⁻³	20,000	1	0.1	+1.5 0	1,050
DJC-95CRD	95	50	126	20	3	18	M10	50	450	900	6,000	2.3×10 ⁻³	30,000	1	0.1	+2.0 0	1,600
DJC-100CRD	104	56	140	21	3.5	20	M12	90	600	1,200	6,000	4.6×10 ⁻³	40,000	1	0.1	+2.0 0	2,550

Mass and Moment of inertia are measured with max bore size.

Product NO.	Standard Inner diameter(D1, D2) (mm)																													
	3	4	4.5	5	6	6.35	7	8	9.525	10	11	12	14	15	16	18	19	20	22	24	25	26	28	30	32	35	38	40	45	50
DJC-14□	•	•	•	•																										
DJC-20□		•	•	•	•	•	•	•	•	•																				
DJC-25□				•	•	•	•	•	•	•	•	•																		
DJC□-30□					•	•	•	•	•	•	•	•	•	•																
DJC□-40□							•	•	•	•	•	•	•	•	•	•														
DJC-55□									•	•	•	•	•	•	•	•	•	•	•	•	•	•	•	•	•	•	•	•	•	•
DJC-65□												•	•	•	•	•	•	•	•	•	•	•	•	•	•	•	•	•	•	•
DJC-80□													•	•	•	•	•	•	•	•	•	•	•	•	•	•	•	•	•	•
DJC-95□																		•	•	•	•	•	•	•	•	•	•	•	•	•
DJC-100□																			•	•	•	•	•	•	•	•	•	•	•	•