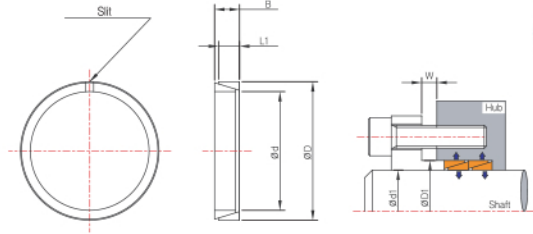
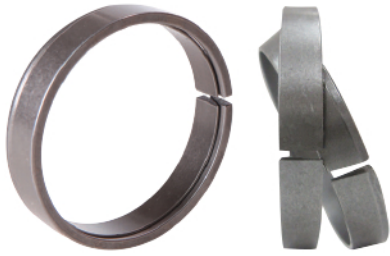


# DR300C (There are slits found)

Order method

**DR300C-20×25**  
Product No. d D



DR300C has any slit found, so initial clamping force is not required and its bolts are clamped.

DR300/DR300C d×D	DR300						DR300C					
	Pre load force	Tightening torque	Transfer		Surface pressure		Tightening torque	Transfer		Surface pressure		
			Thrust	Torque	Shaft	Hub		Thrust	Torque	Shaft	Hub	
mm	N	N · m	kN	N · m	Mpa	Mpa	N · m	kN	N · m	Mpa	Mpa	
5×8	9,780	2.5	0.8	2	113	71	1.0	1.2	3	169	105	
6×9	8,910	2.5	1.0	3	117	78	1.0	1.2	4	140	94	
7×10	8,310	2.5	1.1	4	114	80	1.2	1.4	5	144	101	
8×11	8,040	2.5	1.2	5	105	76	1.2	1.4	6	126	92	
9×12	7,650	3	1.8	8	147	110	2.0	2.4	11	187	140	
10×13	7,000	3	2.0	10	142	110	2.0	2.4	12	168	130	
11×14	7,000	3	2.0	11	130	102	2.0	2.4	13	153	120	
12×15	7,000	3	2.0	12	119	95	2.0	2.4	14	140	112	
13×16	6,500	3	2.1	14	116	94	2.5	2.9	19	162	132	
14×18	11,000	6	3.2	23	115	90	4.1	3.9	27	138	107	
15×19	10,800	6	3.3	25	109	86	4.1	3.9	29	129	102	
16×20	10,000	6	3.4	28	108	86	4.1	3.9	31	121	97	
17×21	9,600	6	3.5	30	104	84	4.1	3.9	33	114	92	
18×22	9,150	6	3.6	33	101	83	4.1	3.9	35	107	88	
19×24	12,500	10	5.2	50	138	109	9	7.0	67	185	147	
20×25	12,000	10	5.3	53	133	107	9	7.0	70	176	141	
22×26	9,000	10	6.0	66	136	115	9	7.0	77	160	135	
24×28	8,400	10	6.1	73	128	109	9	7.0	84	147	126	
25×30	10,000	10	5.8	72	116	96	9	7.0	88	141	117	
28×32	7,500	10	6.3	88	113	99	9	7.0	98	126	110	
30×35	8,600	10	6.1	91	101	87	9	7.0	105	117	101	
32×36	7,900	10	8.2	132	129	114	9	8.8	141	137	122	
35×40	10,000	10	9.8	171	123	108	9	11	185	133	117	
36×42	11,700	10	9.4	169	115	99	9	11	190	130	111	
38×44	11,000	10	9.5	181	111	96	9	11	200	123	106	
40×45	13,900	25	12	238	120	106	24	14	287	144	128	
42×48	15,550	25	12	242	110	97	24	14	302	137	120	
45×52	28,300	25	16	365	111	96	24	22	485	148	128	
48×55	24,700	25	24	588	157	137	24	29	690	185	161	
50×57	23,600	25	25	618	153	134	24	29	718	177	155	
55×62	21,700	25	25	692	141	125	24	29	790	161	143	
56×64	29,500	50	29	804	131	114	50	35	986	160	140	
60×68	27,500	50	29	875	124	109	50	35	1,056	150	132	
63×71	26,500	50	29	926	119	106	50	35	1,109	143	126	
65×73	25,500	50	30	962	116	103	50	35	1,144	138	123	
70×79	31,000	50	40	1,404	125	110	50	47	1,643	146	129	
71×80	31,000	50	40	1,425	123	109	50	47	1,667	144	128	
75×84	34,700	50	39	1,474	114	102	50	47	1,760	136	122	
80×91	48,000	50	48	2,214	106	94	50	59	2,347	130	114	
85×96	45,500	50	60	2,568	126	111	50	70	2,993	147	130	
90×101	43,600	50	61	2,737	120	107	50	70	3,169	138	123	
95×106	41,300	50	61	3,059	114	102	50	70	3,345	131	117	
100×114	61,000	90	92	4,611	131	115	100	117	5,869	166	146	