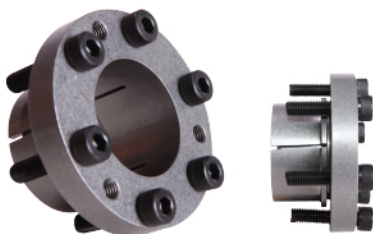


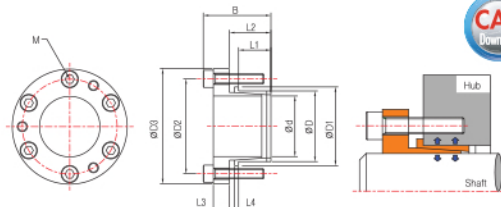
# DR300EF

Order method

**DR300EF-20×25**  
Product No. d D



**Features** : Same inside and outside diameter as that of DR300 and DR300C type. Centering function is available.



**Usage** : Pump, Cam, Sprocket, Wheel, Gear, Pulley etc.  
**Specifications** : Surface roughness, Processing tolerance

DR300EF d×D	Dimension								Tightening screw(DIN912/12.9)			Transfer		Surface pressure		Mass
	D1	D2	D3	L1	L2	L3	L4	B	Size	Quantity	Tightening torque	Thrust	Torque	Shaft	Hub	
mm	mm	mm	mm	mm	mm	mm	mm	mm	M	Qty	N · m	kN	N · m	Mpa	Mpa	kg
5×8	8	15	21.5	7	9.5	4	-	16.5	M3	3	1.9	1.69	5	200	134	0.013
6×9	9	16	22.5	7	9.5	4	-	16.5	M3	3	1.9	1.87	6	195	132	0.015
8×11	11	18	24.5	7	9.5	4	-	16.5	M3	3	1.9	2.12	9	190	123	0.017
10×13	16	22	30	11.5	14.5	5	1.5	23.5	M4	3	4.0	7.79	39	292	224	0.04
11×14	17	23	31	11.5	14.5	5	1.5	23.5	M4	3	4.0	7.79	43	266	209	0.04
12×15	18	24	32	11.5	14.5	5	1.5	23.5	M4	3	4.0	7.79	47	243	195	0.04
14×18	22	27	35	16.0	20.0	6	2.0	30.0	M4	4	4.0	10.40	73	209	163	0.06
15×19	23	28	36	16.0	20.0	6	2.0	30.0	M4	4	4.0	10.40	78	195	154	0.07
16×20	24	29	37	16.0	20.0	7	2.0	31.0	M4	6	4.0	15.60	124	273	219	0.08
17×21	25	30	38	16.0	20.0	7	2.0	31.0	M4	6	4.0	15.60	132	258	209	0.08
18×22	26	33	43	16.0	20.0	7	2.0	32.0	M5	4	8.3	17.10	154	267	218	0.10
19×24	28	35	45	16.0	20.0	7	2.0	32.0	M5	4	8.3	17.10	163	252	200	0.11
20×25	29	36	46	16.0	20.0	7	2.0	32.0	M5	4	8.3	17.10	171	240	192	0.12
22×26	30	38	48	16.0	20.0	7	2.0	32.0	M5	4	8.3	17.10	186	218	184	0.12
24×28	32	40	50	16.0	20.0	7	2.0	32.0	M5	4	8.3	17.10	206	200	172	0.12
25×30	34	42	52	16.0	20.0	7	2.0	32.0	M5	4	8.3	17.10	216	192	160	0.16
28×32	36	44	54	16.0	20.5	8	2.0	33.5	M5	6	8.3	25.60	353	257	224	0.16
30×35	39	47	57	16.0	20.5	8	2.0	33.5	M5	6	8.3	25.60	382	240	206	0.19
32×36	41	49	59	16.0	21.0	9	2.5	35.0	M5	6	8.3	25.60	412	224	200	0.20
35×40	45	53	63	17.5	22.5	9	2.5	36.5	M5	6	8.3	25.60	451	178	157	0.23
38×44	49	58	70	17.5	23.0	10	2.5	39.0	M6	6	13.7	36.10	686	231	200	0.33
40×45	50	59	71	20.0	25.5	10	2.5	41.5	M6	6	13.7	36.10	725	180	161	0.33
42×48	53	62	74	20.0	25.5	11	2.5	42.5	M6	8	13.7	48.00	1,010	229	201	0.40
45×52	58	69	84	25.0	31.5	13	3.0	52.5	M8	6	34.3	66.30	1,490	244	211	0.65
48×55	61	72	87	25.0	31.5	13	3.0	52.5	M8	6	34.3	66.30	1,600	228	199	0.68
50×57	63	74	89	25.0	31.5	13	3.0	52.5	M8	6	34.3	66.30	1,660	220	192	0.69
55×62	68	79	94	25.0	31.5	13	3.0	52.5	M8	6	34.3	66.30	1,820	199	176	0.74
60×68	75	86	101	27.0	34.0	13	3.5	55.0	M8	6	34.3	66.30	1,990	164	144	0.86
65×73	80	91	106	27.0	34.0	15	3.5	57.0	M8	8	34.3	88.50	2,870	201	179	1.10
70×79	86	97	112	31.0	38.0	15	3.5	61.0	M8	8	34.3	88.50	3,100	177	158	1.20
75×84	91	102	117	31.0	38.5	16	3.5	62.5	M8	10	34.3	111	4,150	207	185	1.30
80×91	99	110	125	34.0	42.0	17	4.0	67.0	M8	10	34.3	111	4,420	176	155	1.70
85×96	104	118	137	34.0	42.5	19	4.0	71.5	M10	8	67.6	141	5,980	212	187	2.20
90×101	109	123	142	34.0	42.5	19	4.0	71.5	M10	8	67.6	141	6,330	200	179	2.30
95×106	114	128	147	34.0	42.5	19	4.0	71.5	M10	8	67.6	141	6,680	189	170	2.40
100×114	122	136	155	42.0	50.5	20	4.0	80.5	M10	10	67.6	176	8,790	165	144	3