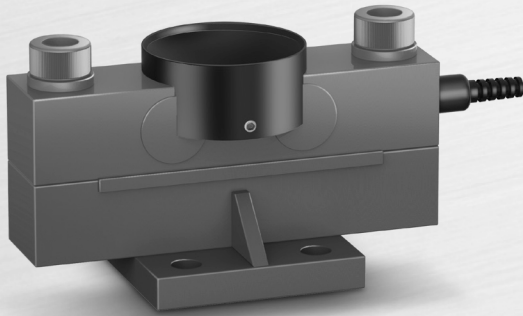


# DSB-B

## Double Ended Beam Load Cell



### Features

- ▶ Compressed type
- ▶ Robust design and easy installation
- ▶ Strong against shock or side force
- ▶ Designed according to IP67

### Option

- ▶ Accessory Set

### Accessory Features

- ▶ Easy loadcell replacement
- ▶ Appropriate for tank and truck scale application
- ▶ High resolution by use of ball

### Application

- ▶ Hopper, Tank Scale
- ▶ Tank Scale

### Description

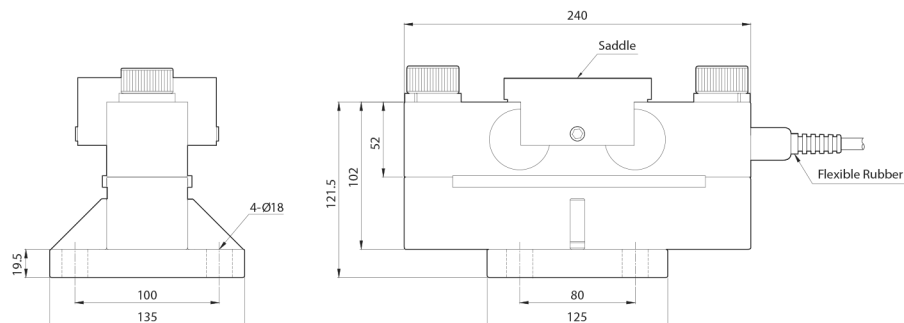
DSB-B is double ended type loadcell, and is suitable for high capacity hopper and tank scale and truck scale. Also through the ball, the force structure makes minimum side force.

### Specifications

Capacity(R.L.)	tf	10, 25, 30	
Rated Output	mV / V	2.0 ± 0.004	
Zero Balance	mV / V	0.0 ± 0.02	
Accuracy Class	-	-	
Non-Linearity	% R.O.	≤ 0.03	
Hysteresis	% R.O.	≤ 0.03	
Combined Error	% R.O.	≤ 0.03	
Repeatability	% R.O.	≤ 0.02	
Creep for 30min.	% R.O.	≤ 0.03	
Return for 30min.	% R.O.	≤ 0.03	
Resolution	-	≤ 1/3000	
Division	mV / V	0.00067	
Temperature Effect on	-Zero Value -Output Value	%/10°C %/10°C	≤ 0.03 ≤ 0.015
Excitation	-Recommended -Maximum	V V	10 15
Resistance	-Input -Output -Insulation	Ω Ω MΩ	800 ± 40 700 ± 7 > 2000
Compensated Temperature Range	°C		-10 to +40
Operating Temperature Range	°C		-30 to +80
Material & Plate	-		Steel / Coating
Cable Specification	-		Ø8 x 4P x 15m (PVC)
Safety Overload	% R.L.		150% R.L.

### Dimensions

- ▶ DSB-B



Accessory Dimensions

► DSB-B

