

Enclosed Power Switch

KDS Series



Part Number Description

KDS	-	1	2
1 Position	1 : 2 Position (on - on)	2 : 2 Position (on - off)	3 : 3 Position (on - off - on)
2 Lamp operation	P : LED ON with power	L : LED ON with Load connection	
☞ Cover color : smoke			

General Specification

Contact Resistance	Max. 50mΩ
Dielectric Strength	1000VAC 1 minute
Insulation Resistance	100MΩ 500VDC
Ambient Temperature	-25 ~ 75°C (with no icing or condensing)
Ambient Humidity	50 ~ 95% RH(no condensing)
Tightening Torque	1.2 N.m (12.25 Kgf.cm)
built-in switch	KC, TUV

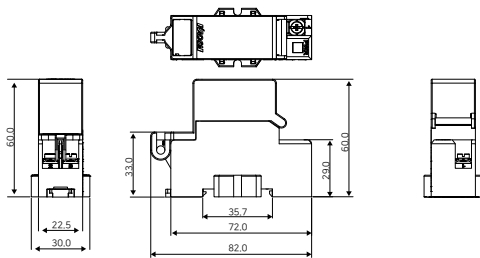
Product Selection

Part Number	Position	LED
KDS-1	on - on	
KDS-2P	2 position on - off	power on/LED on
KDS-2L		load on/LED on
KDS-3	3 position on - off - on	

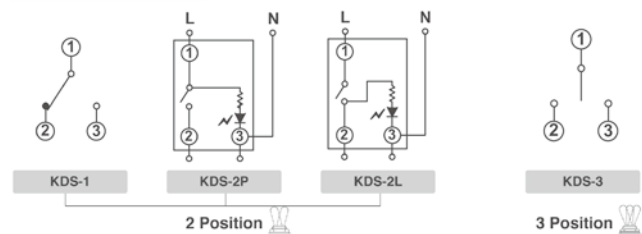


Dimension

unit : mm



Diagram



Accessory

KDS-N1	KDS-N2	KDS-N3	KDS-N4	KDS-N5	KDS-N6	KDS-N7	KDS-N8