

# Magnetic Contactor

## KMC Series

### Part Number Description



① Description	25S : 25A	30S : 30A	40S : 40A	50S : 50A
② Supply Voltage	110VAC	220VAC		

### General Specification

Rating Model	Standard ( AC Grade3 )				Inching ( AC Grade4 )				Operating current AC Grade 1	Life Cycle (X10K)			Closed & Breaking Current		*
	100 - 110V	200 - 220V	380 - 440V	500 - 550V	100 - 110V	200 - 220V	380 - 440V	500 - 550V		AC Grade 3*	AC Grade 4**	Mechanical***	Closed Current	Breaking Current	
KMC-25S	25A	25A	21A	17A	20A	20A	14A	12A	35A	25	1.5	250	150	25	1,200 times/hour
KMC-30S	30A	30A	23A	21A	22A	22A	20A	14A	40A	25	1.5	250	180	30	600 times/hour
KMC-40S	40A	40A	32A	26A	25A	25A	24A	17A	50A	25	1.5	250	240	40	1,200 times/hour
KMC-50S	50A	50A	48A	38A	35A	35A	32A	24A	60A	25	1.5	250	300	50	1,200 times/hour

\*,\*\*,\*\*\*) Although the device can operate within a range of 85 % - 110 % of the rated operating voltage, use the rated voltage for continuous operation.

☞ Specifications and materials can change without prior notice.

### Coil Ratings

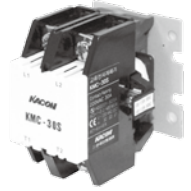
Coil Voltage	Operating Voltage Range	Coil Resistance(Ω) (±10%)	Coil Current(mA)	Power(W) Consumption	Pick up Voltage(V) PV	Drop out Voltage(V) RV	Operate Timing
220VAC	208 - 240VAC 50/60Hz	975	39	2.7	176	66	on : 45ms off : 15ms
110VAC	100 - 120VAC 50/60Hz	264	85.8	2.7	80	30	

### General Ratings

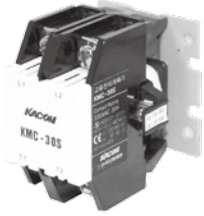
Ambient Temperature	-25°C - +55°C (with no icing or condensing)
Storage Temperature	-30°C - +65°C (with no icing or condensing)
Ambient Humidity	45 - 85% RH (no condensing)

### Mechanical Ratings

Model	Input				Output			
	Terminal Dimensions	Wiring(mm <sup>2</sup> )	Crimp Terminals(mm <sup>2</sup> )	Torque (kgf·cm)	Terminal Dimensions	Wiring(mm <sup>2</sup> )	Clamp Terminals(mm <sup>2</sup> )	Torque (kgf·cm)
KMC-25S	M5×12	5.5 - 8	5.5-5 - 8-5	26(±20%)	M3.5	1.25 - 2	1.25-3.5 - 2-3.5	12(±20%)
KMC-30S								
KMC-40S								
KMC-50S								



## Product Selection

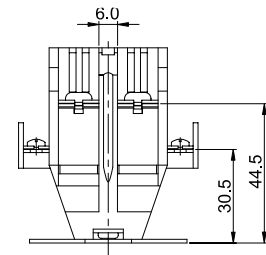
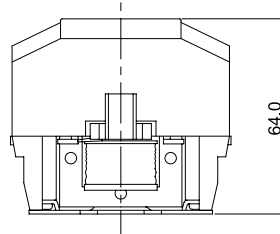
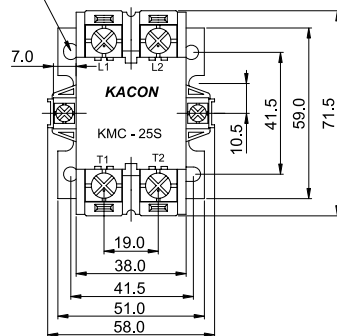


Contact Rating - Standard(AC grade3)				Rated Voltage	Part Number
100 - 110V	200 - 220V	380 - 440V	500 - 550V		
25A	25A	21A	17A	110VAC	KMC-25S 110VAC
				220VAC	KMC-25S 220VAC
30A	30A	23A	21A	110VAC	KMC-30S 110VAC
				220VAC	KMC-30S 220VAC
40A	40A	32A	26A	110VAC	KMC-40S 110VAC
				220VAC	KMC-40S 220VAC
50A	50A	48A	38A	110VAC	KMC-50S 110VAC
				220VAC	KMC-50S 220VAC

## Dimension

unit : mm

4-Ø5.0 panel mounting



※ KMC-25S, KMC-30S, KMC-40S, KMC-50S : same dimensions