



# KPS-CT SERIES

- OVERVIEW
- Small size photo sensor
- Through-beam type
- IP-Rating : IP40



PHOTO SENSOR

## CLASSIFICATION

KPS - CT  $\frac{\square}{\textcircled{1}}$   $\frac{\square}{\textcircled{2}}$

① Installation	V	Vertical
	H	Horizontal
② Control output	N	NPN

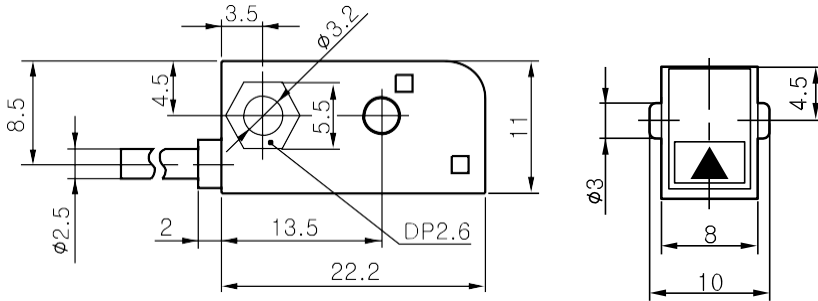
## Specification

Model	KPS-CTV	
	Transmitter	Receiver
SENSING DISTANCE	1.5 m	
STANDARD SENSING OBJECT	OPAQUE OBJECT WITH MINIMUM $\phi 6$ DIAMETER	
POWER CONSUMPTION	20mA	20mA
LIGHT SOURCE	Infra Red LED(940nm)	-
VOLTAGE	DC 12~24V	
RESPONSE TIME	Max. 1 ms	
Output	-	NPN/PNP output
External light interference	incandescent light 3,000 lx, light of the sun 10,000lx	
Protection	IP40	
Insulation Resistance	min. 20M $\Omega$ (DC500V)	
Dielectric Strength	50/60Hz 500VAC for 1 minute	
Ambient Temperature	-20~+60°C	
Vibration resistance	10~55Hz at double amplitude: 1.5mm(X,Y,Z directions) for 1 hour	
Shock resistance	50G	
Material	Case: PBT, Lens: PC	
Cable	$\phi 2.4$ , 2m, 2P	$\phi 2.4$ , 2m, 3P

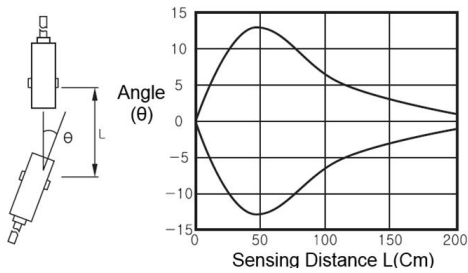


# PHOTO SENSORS

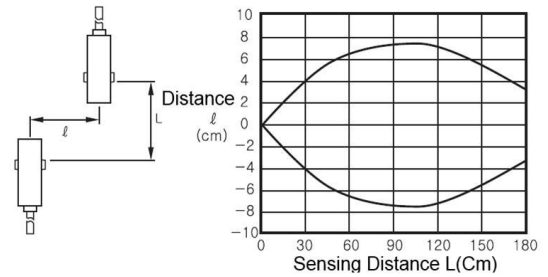
## Dimensions



## Angle Characteristic



## Parallel Operation Range



## I/O Circuit Diagram

