

LS-EXP

Explosion Proof
Disk Load Cell



Features

- ▶ Tensile / Compression Type
- ▶ Hermetically sealed structure
- ▶ Explosion-proof structure (intrinsic safety, internal pressure, dust)
- ▶ Designed according to IP68

Option

- ▶ Tensile Accessories (Rod End Bearing Type)
- ▶ Compression type accessories (Load button, ball type)
- ▶ LS-EXP / intrinsically safe explosion proof (Ex ia °C T4) (1 ~ 300tf)
- ▶ LS-EXP-D / Explosion proof (Ex d °C T4) (1 ~ 50tf)
- ▶ LS-EXP-TD / dust explosion proof (Ex td A21 T135 °C IP68) (1 ~ 50tf)

Application

- ▶ Hopper, tank, silo scale
- ▶ Tensile / Compression Tester

Description

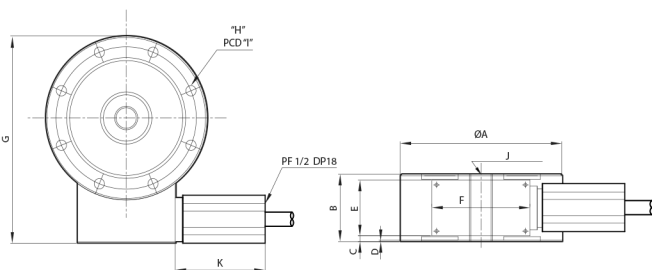
LS-EXP is Canister type load cell of steel material. Designed as an explosion-proof structure, it is suitable for rugged industrial environments such as explosion-proof hoppers and tanks, silos and truck scales in explosion hazardous areas. It is made of steel material and has IP68 waterproof and dustproof structure.

Specifications

Capacity(R.L.)	tf	1, 2, 3, 5, 10, 20, 30, 50, 100, 200, 300	
Rated Output	mV / V	2.0 ± 0.005 / 3.0 ± 0.0075 (200tf, 300tf)	
Zero Balance	mV / V	0.0 ± 0.02	
Accuracy Class	-	A	B
Non-Linearity	% R.O.	≤ 0.02	≤ 0.05
Hysteresis	% R.O.	≤ 0.02	≤ 0.05
Combined Error	% R.O.	≤ 0.02	≤ 0.05
Repeatability	% R.O.	≤ 0.01	≤ 0.02
Creep for 30min.	% R.O.	≤ 0.03	≤ 0.03
Return for 30min.	% R.O.	≤ 0.03	≤ 0.03
Resolution	-	≤ 1/5000	≤ 1/2000
Division	mV / V	0.0004	0.0001
Temperature Effect on	-Zero Value	%/10°C	≤ 0.03
	-Output Value	%/10°C	≤ 0.03
Excitation	-Recommended	V	10
	-Maximum	V	28
Resistance	-Input	Ω	350 ± 3.5
	-Output	Ω	350 ± 3.5
	-Insulation	MΩ	> 2000
Compensated Temperature Range	°C	-10 to + 40	
Operating Temperature Range	°C	-30 to + 80	
Material & Plate	-	Steel / Coating	
Cable Specification	-	Ø8 x 4P x 5m (10m) (Urethane)	
Safety Overload	% R.L.	150%	

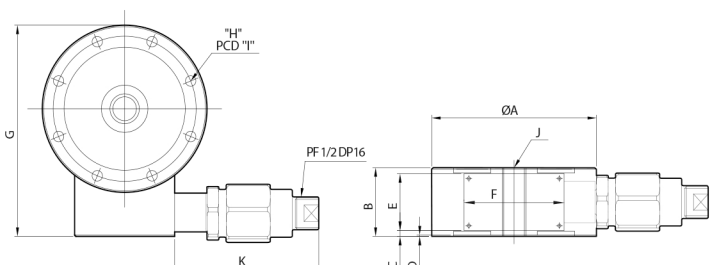
Dimensions

- ▶ Intrinsic Safety explosion proof, (1~300tf)
dust explosion proof (1~50tf)



Capa.	A	B	C	D	E	F	G	H	I	J	K	Cable(m)
1~3tf	112	46	4	1	38	68	142.5	8-Ø7.1	97.2	M16 x 2	52	5
5tf	120	46	4				151.4	8-Ø9	103.2	M18 x 1.5		
10tf	138	60	11				171	8-Ø11	117.6	M24 x 2		
20~30tf	184	80	21				219.5	8-Ø14	157.6	M39 x 2		
50tf	200	60	11				236	12-Ø14.5	170	M45 x 3		
100tf	278	90	2				315.8	16-Ø16.3	229	M70 x 3		
200tf	355	108	35	393.7	12-Ø26	298	M90 x 3	10				
300tf	355	108	35	393.7	12-Ø28	300.5	M100 x 3					

- ▶ Flameproof (1~50tf)



Capa.	A	B	C	D	E	F	G	H	I	J	K	Cable(m)
1~3tf	112	46	4	1	38	68	142.5	8-Ø7.1	97.2	M16 x 2	98	5
5tf	120	46	4				151.4	8-Ø9	103.2	M18 x 1.5		
10tf	138	60	11				171	8-Ø11	117.6	M24 x 2		
20~30tf	184	80	21				219.5	8-Ø14	157.6	M39 x 2		
50tf	200	60	11				236	8-Ø14.5	170	M45 x 3		
100tf	278	90	2				315.8	16-Ø16.3	229	M70 x 3		
200tf	355	108	35	393.7	12-Ø26	298	M90 x 3	10				
300tf	355	108	35	393.7	12-Ø28	300.5	M100 x 3					