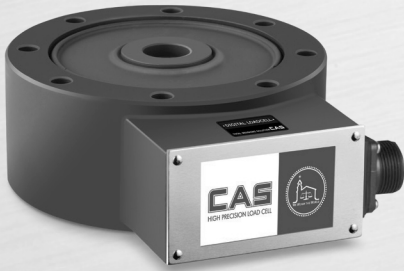


# LS-D | Digital Disk Load Cell



## Description

LS-D is a disk type load cell of steel material. It is possible to diagnose by connecting the load cells individually through the digital output, and when making the weighing system, it is easy and simple to adjust the weighing compensate 4-corner one, check the trouble occurrence, and replace the load cell. Enclosed tension / compression type load cells suitable for harsh industrial environments such as hoppers, tanks and silo scales.

## Specifications

| Capacity(R.L.)                     | tf            | 20, 30, 100, 200, 300 |
|------------------------------------|---------------|-----------------------|
| Rated Output                       | counts        | 300,000               |
| Zero Balance                       | counts        | ± 300                 |
| Non-Linearity                      | % R.O.        | < 0.015               |
| Hysteresis                         | % R.O.        | < 0.015               |
| Combined Error                     | % R.O.        | < 0.015               |
| Repeatability                      | % R.O.        | < 0.01                |
| Creep for 30min.                   | % R.O.        | < 0.017               |
| Temperature - Zero Value           | % R.O./10°C   | 0.014                 |
| Effect on - Output Value           | % R.O./10°C   | 0.011                 |
| Compensated Temperature Range      | °C            | -10 ~ +40             |
| Operating Temperature Range        | °C            | -30 ~ +80             |
| Excitation                         | - Minimum     | V                     |
|                                    | - Recommended | V                     |
|                                    | - Maximum     | V                     |
| Insulation                         | MΩ            | ≥ 2,000               |
| Safety Overload                    | % R.C.        | 150                   |
| Material & Plate                   | -             | Steel / Coating       |
| Communication Method               | -             | RS-485 (2wire)        |
| Communication Speed                | kbit/sec      | 19.2                  |
| Max Cable Length for Communication | m             | 1,000                 |
| Warm-up Time from Cold Start       | minutes       | 15                    |
| Asynchronous Interface Baudrate    | Baud          | 9,600 ~ 115,200       |
| Number of bus addresses            | -             | Max. 32               |

## Features

- ▶ Tensile / Compression Type
- ▶ High output
- ▶ CE Approval
- ▶ Hermetically sealed structure
- ▶ Designed according to IP67

## Option

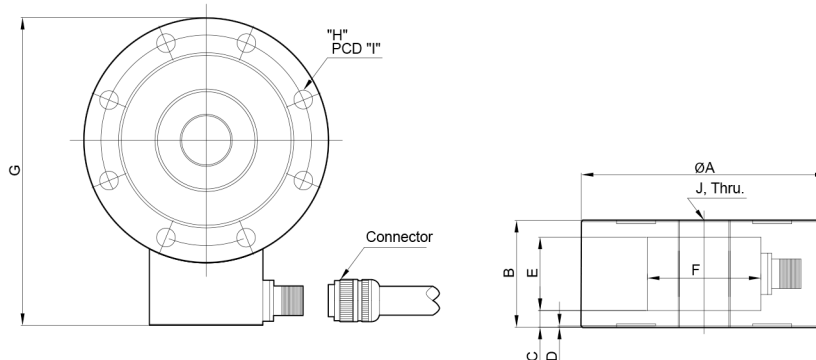
- ▶ Tensile Accessories (Rod End Bearing Type)
- ▶ Compression type accessories (Load button, ball type)

## Application

- ▶ Hopper, tank, silo scale
- ▶ Tensile / Compression Tester

## Dimensions

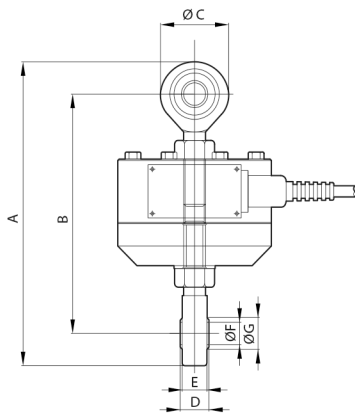
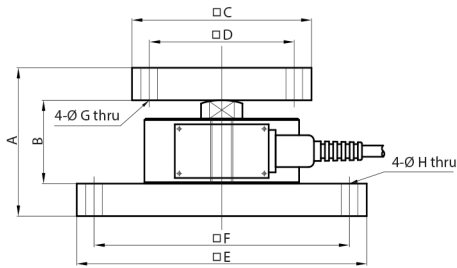
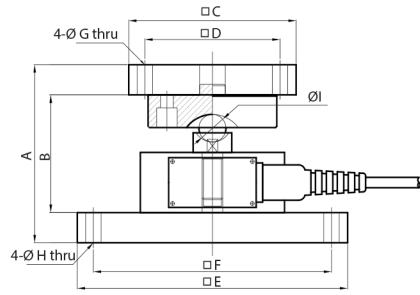
▶ LS-D



| Capa.   | A   | B   | C    | D | E  | F  | G     | H        | I     | J        | Cable(m) |
|---------|-----|-----|------|---|----|----|-------|----------|-------|----------|----------|
| 20~30tf | 184 | 80  | 12.5 | 1 | 55 | 85 | 230.5 | 8-Ø14    | 157.6 | M39 x 2  | 10       |
| 100tf   | 278 | 90  | 11.5 |   |    |    | 326.8 | 16-Ø16.3 | 229   | M70 x 3  |          |
| 200tf   | 355 | 108 | 26.5 |   |    |    | 404.7 | 12-Ø26   | 298   | M90 x 3  |          |
| 300tf   | 355 | 108 | 26.5 |   |    |    | 404.7 | 12-Ø28   | 298   | M100 x 3 |          |

Accessory Dimensions

► LS



► Ball type

| Capa.   | A      | B      | C         | D         | E         | F         | G  | H  | I     |
|---------|--------|--------|-----------|-----------|-----------|-----------|----|----|-------|
| 1~3tf   | 136.43 | 90.43  | 130 x 130 | 105 x 105 | 210 x 130 | 185 x 105 | 12 | 12 | 21.43 |
| 5tf     | 146.75 | 100.75 |           |           | 210 x 130 | 185 x 105 |    | 12 | 31.75 |
| 10tf    | 167.75 | 114.75 |           |           | 160 x 160 | 125 x 125 |    | 14 | 31.75 |
| 20~30tf | 197.75 | 144.75 |           |           | 200 x 200 | 160 x 160 |    | 14 | 31.75 |

► Load button

| Capa.   | A   | B   | C         | D         | E         | F         | G  | H    |
|---------|-----|-----|-----------|-----------|-----------|-----------|----|------|
| 1~3tf   | 105 | 59  | 130 x 130 | 105 x 105 | 210 x 130 | 185 x 105 | 12 | 12   |
| 5tf     | 107 | 61  | 130 x 130 | 105 x 105 | 210 x 130 | 185 x 105 | 12 | 12   |
| 10tf    | 140 | 80  | 160 x 160 | 125 x 125 | 160 x 160 | 125 x 125 | 14 | 14   |
| 20~30tf | 175 | 115 | 200 x 200 | 150 x 150 | 200 x 200 | 160 x 160 | 14 | 14   |
| 50tf    | 170 | 105 | 200 x 200 | 150 x 150 | 360 x 360 | 280 x 280 | 18 | 22.5 |
| 100tf   | 225 | 155 | 300 x 300 | 210 x 210 | 430 x 430 | 310 x 310 | 22 | 26   |

► Rod end bearing

| Capa.   | A   | B   | C   | D  | E  | F  | G    |
|---------|-----|-----|-----|----|----|----|------|
| 1~3tf   | 216 | 170 | 50  | 21 | 18 | 16 | 19.3 |
| 5tf     | 257 | 197 | 60  | 23 | 22 | 18 | 21.9 |
| 10tf    | 430 | 328 | 102 | 28 | 27 | 22 | 25.8 |
| 20~30tf | 558 | 423 | 135 | 40 | 38 | 39 | 45   |