
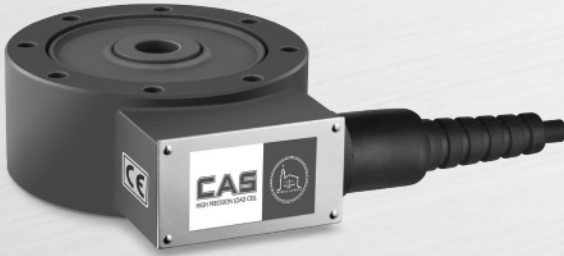


LS-NR

Noise Resistance
Disk Load Cell

Features

- ▶ Tensile / Compression Type
- ▶ Hermetically sealed structure
- ▶ Built-in noise and surge protection circuit
- ▶ Obtained CE certification
- ▶ Designed according to IP67

Option

- ▶ Tensile Accessories (Rod End Bearing Type)
- ▶ Compression type accessories (Load button, ball type)

Application

- ▶ Hopper, tank, silo scale
- ▶ Tensile / Compression Tester

Description

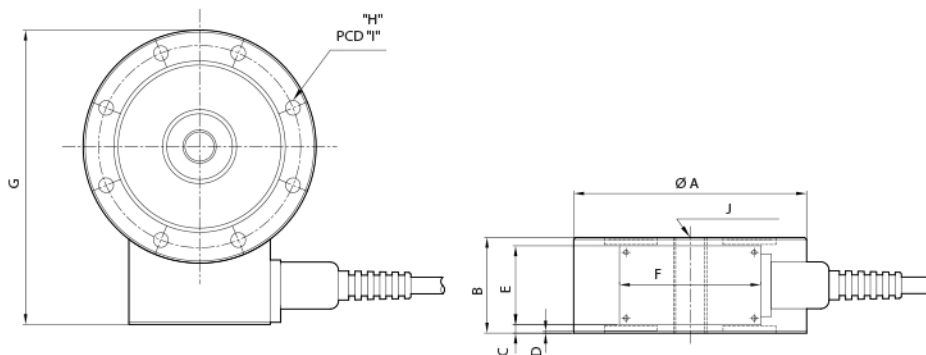
LS-NR is a disk type load cell, of steel material. It is a load cell with high electrical durability. The protection circuit inside the load cell protects against various noise, surge and lightning. Enclosed tension / compression type load cells suitable for harsh industrial environments such as hoppers, tanks and silo scales.

Specifications

Capacity(R.L.)		tf	1, 2, 3, 5, 10, 20, 30, 50, 100, 200, 300
Rated Output	mV / V		2.0±0.005
Zero Balance	mV / V		0.0±0.02
Accuracy Class	-		-
Non-Linearity	% R.O.		≤ 0.02
Hysteresis	% R.O.		≤ 0.02
Combined Error	% R.O.		≤ 0.02
Repeatability	% R.O.		≤ 0.01
Creep for 30min.	% R.O.		≤ 0.03
Return for 30min.	% R.O.		≤ 0.03
Resolution	-		≤ 1/5000
Division	mV / V		0.0004
Temperature Effect on	- Zero Value	%/10°C	≤ 0.03
	- Output Value	%/10°C	≤ 0.03
Excitation	- Recommended	V	10
	- Maximum	V	15
Resistance	- Input	Ω	350 ± 3.5
	- Output	Ω	350 ± 3.5
	- Insulation	MΩ	≥ 500
Compensated Temperature Range	°C		-10 to +40
Operating Temperature Range	°C		-30 to +80
Material & Plate	-		Steel / Coating
Cable Specification	-		Ø8 x 4P x 5m(10m) (PVC)
Safety Overload	% R.L.		150
Electrical Character	- Over Voltage	V. %	75 AC/DC ±25%
	- RS	MHz	80 ~ 1000MHz, 10V/m
	- Surge	kV	±2

Dimensions

▶ LS-NR



Capa.	A	B	C	D	E	F	G	H	I	J	Cable(m)
1~3tf	112	46	4	1	38	68	141.5	8-ø7.1	97.2	M16X2	5
5tf	120	46	4				150.4	8-ø9	103.2	M18X1.5	
10tf	138	60	11				170	8-ø11	117.6	M24X2	
20~30tf	184	80	21				218.5	8-ø14	157.6	M39X2	10
50tf	200	60	7.8				235	12-ø14.5	170	M45X3	
100tf	278	90	20				314.8	16-ø16.3	229	M70X3	
200tf	355	108	35	392.7	12-ø26	298	M90X3				
300tf	355	108	35				392.7	12-ø28	300.5	M100X3	