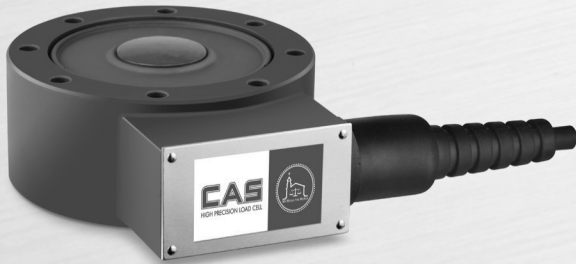


LSC | Disk Load Cell



Description

LSC is a disk type load cell of steel material. It is suitable for Hopper, Tank, Silo Scale

Features

- ▶ Compression type
- ▶ Load Button Type accessory integral structure
- ▶ Hermetically sealed structure
- ▶ Designed according to IP66

Application

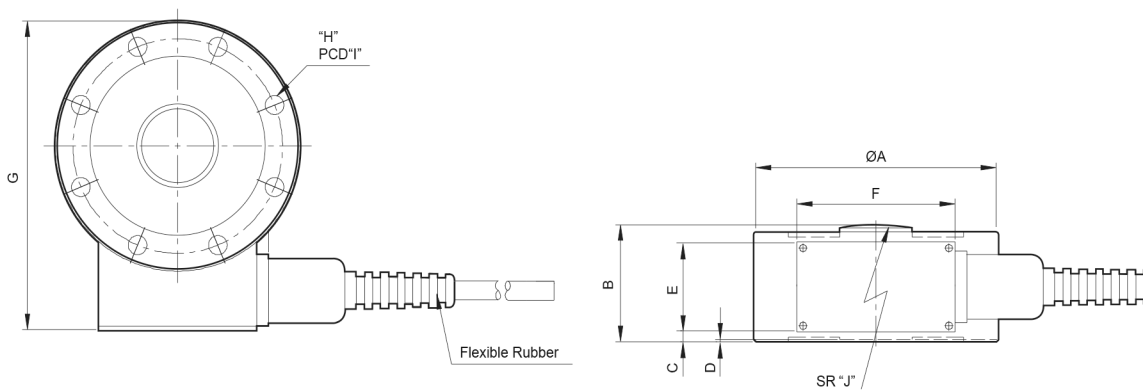
- ▶ Hopper, tank, silo scale
- ▶ Compression Tester

Specifications

Capacity(R.L.)		tf	2, 5, 10, 20, 50, 100
Rated Output		mV / V	3.0 ± 0.0075
Zero Balance		mV / V	0.0 ± 0.03
Accuracy Class		-	-
Non-Linearity	% R.O.		≤0.05
Hysteresis	% R.O.		≤0.05
Combined Error	% R.O.		≤0.05
Repeatability	% R.O.		≤0.02
Creep for 30min.	% R.O.		≤0.03
Return for 30min.	% R.O.		≤0.03
Resolution	-		≤1/2000
Division	mV / V		0.0015
Temperature Effect on	-Zero Value	%/10°C	≤0.03
	-Output Value	%/10°C	≤0.03
Excitation	-Recommended	V	10
	-Maximum	V	15
Resistance	-Input	Ω	350 ± 3.5
	-Output	Ω	350 ± 3.5
	-Insulation	MΩ	> 2000
Compensated Temperature Range	°C		-10 to +40
Operating Temperature Range	°C		-30 to +80
Material & Plate			Steel / Coating
Cable Specification			Ø8 X 4P X 5m (10m) (PVC)
Safety Overload	% R.L.		150

Dimensions

▶ LSC



Capa.	A	B	C	D	E	F	G	H	I	J	Cable(m)
2-5tf	105	35	1	1	30	65	130.7	8-ø7	90	100	5
10tf	120	45	2		38	68	150.4	8-ø9	104.5	100	
20tf	120	45	2		38	68	150.4	8-ø9	104.5	100	
50tf	190.5	57.2	6.4		38	68	225.2	12-ø13.5	159	200	10
100tf	209.2	82.6	19.1		38	68	244.5	4-ø18	171.5	200	