

LSS-EXP

Explosion Proof
Disk Load Cell



Description

LSS-EXP is a Stainless steel disk type load cell. Designed with explosion proof structure, it is suitable for Hopper, Tank, Silo Scale. Stainless and waterproof, suitable for humid environments.

Specifications

Capacity(R.L.)	tf	1, 2, 3, 5, 10, 20, 30, 50	
Rated Output	mV / V	2.0 ± 0.005	
Zero Balance	mV / V	0.0 ± 0.02	
Accuracy Class	-	-	
Non-Linearity	% R.O.	≤ 0.03	
Hysteresis	% R.O.	≤ 0.03	
Combined Error	% R.O.	≤ 0.03	
Repeatability	% R.O.	≤ 0.02	
Creep for 30min.	% R.O.	≤ 0.03	
Return for 30min.	% R.O.	≤ 0.03	
Resolution	-	≤ 1/3000	
Division	mV / V	0.00067	
Temperature Effect on	-Zero Value	%/10°C	≤ 0.03
	-Output Value	%/10°C	≤ 0.03
Excitation	-Recommended	V	10
	-Maximum	V	28
Resistance	-Input	Ω	350 ± 3.5
	-Output	Ω	350 ± 3.5
	-Insulation	MΩ	> 2000
Compensated Temperature Range	°C	-10 to + 40	
Operating Temperature Range	°C	-30 to + 80	
Material & Plate	-	Stainless steel	
Cable Specification	-	Ø8 x 4P x 5/10m (Urethane)	
Safety Overload	% R.L.	150%	

Features

- ▶ Tensile / Compression Type
- ▶ Stainless Steel
- ▶ Hermetically sealed structure
- ▶ Explosion-proof structure (intrinsic safety, internal pressure, dust)
- ▶ Designed according to IP68

Option

- ▶ Tensile Accessories (Rod End Bearing Type)
- ▶ Compression type accessories (rod button, ball type)
- ▶ LSS-EXP / intrinsically safe explosion proof (Ex ia II C T4)
- ▶ LSS-EXP-D / Explosion proof (Ex d IIC T4)
- ▶ LSS-EXP-TD / dust explosion proof (Ex tD A21 T135 °C IP68)

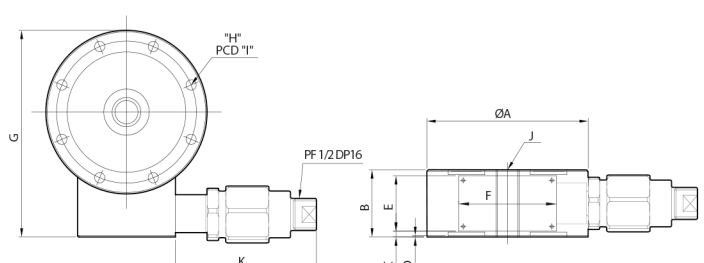
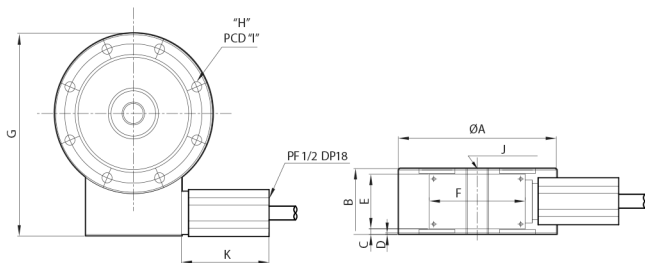
Application

- ▶ Hopper, tank scale
- ▶ Tensile / Compression Tester

Dimensions

▶ Intrinsic Safety explosion , dust explosion proof

▶ Flameproof

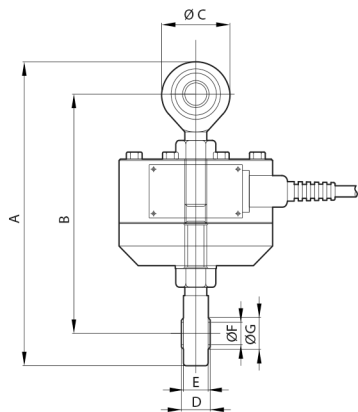
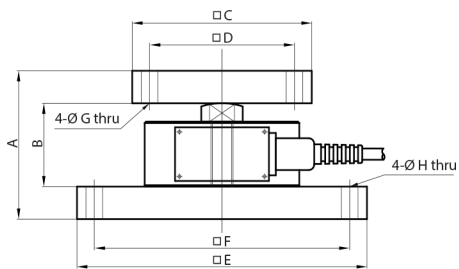
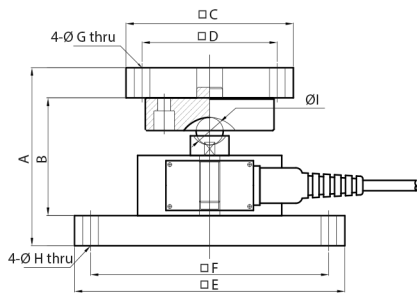


Capa.	A	B	C	D	E	F	G	H	I	J	Cable (m)
1~3tf	112	46	4	1	38	68	142.5	8-Ø7.1	97.2	M16 x 2	5
5tf	120	46	4				151.4	8-Ø9	103.2	M18 x 1.5	
10tf	138	60	11				171	8-Ø11	117.6	M24 x 2	
20~30tf	184	80	21				219.5	8-Ø14	157.6	M39 x 2	
50tf	200	60	7.8				236	12-Ø14.5	170	M45 x 3	

Capa.	A	B	C	D	E	F	G	H	I	J	K	Cable (m)
1~3tf	112	46	4	1	38	68	142.5	8-Ø7.1	97.2	M16 x 2	98	10
5tf	120	46	4				151.4	8-Ø9	103.2	M18 x 1.5		
10tf	138	60	11				171	8-Ø11	117.6	M24 x 2		
20~30tf	184	80	21				219.5	8-Ø14	157.6	M39 x 2		
50tf	200	60	11				236	8-Ø14.5	170	M45 x 3		

Accessory Dimensions

► LSS



► Ball type

Capa.	A	B	C	D	E	F	G	H	I
1~3tf	136.43	90.43	130 x 130	105 x 105	210 x 130	185 x 105	12	12	21.43
5tf	146.75	100.75			210 x 130	185 x 105		12	31.75
10tf	167.75	114.75			160 x 160	125 x 125		14	31.75
20~30tf	197.75	144.75			200 x 200	160 x 160		14	31.75

► Load button

Capa.	A	B	C	D	E	F	G	H
1~3tf	105	59	130 x 130	105 x 105	210 x 130	185 x 105	12	12
5tf	107	61	130 x 130	105 x 105	210 x 130	185 x 105	12	12
10tf	140	80	160 x 160	125 x 125	160 x 160	125 x 125	14	14
20~30tf	175	115	200 x 200	150 x 150	200 x 200	160 x 160	14	14
50tf	170	105	200 x 200	150 x 150	360 x 360	280 x 280	18	22.5

► Rod end bearing

Capa.	A	B	C	D	E	F	G
1~3tf	216	170	50	21	18	16	19.3
5tf	257	197	60	23	22	18	21.9
10tf	430	328	102	28	27	22	25.8
20~30tf	558	423	135	40	38	39	45