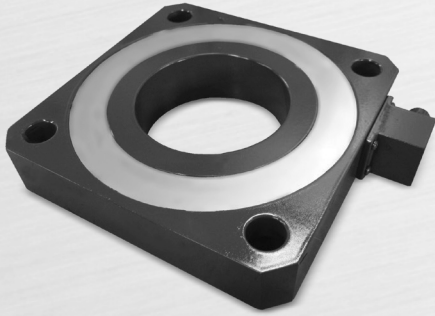


LSW-HM | Disk Load Cell



Description

LSW-HM is a low profile disk type load cell of steel material. It is suitable for compression tester and load control system

Features

- ▶ Compression Type
- ▶ hollow type
- ▶ Designed according to IP66

Application

- ▶ Compression Tester

Specifications

| Capacity(R.L.) | | tf | 3.5 |
|-------------------------------|---------------|--------|------------------------|
| Rated Output | mV / V | | 1.0 ± 0.1 |
| Zero Balance | mV / V | | 0.0 ± 0.005 |
| Accuracy Class | - | | - |
| Non-Linearity | % R.O. | | ≤ 0.10 |
| Hysteresis | % R.O. | | ≤ 0.05 |
| Combined Error | % R.O. | | ≤ 0.10 |
| Repeatability | % R.O. | | ≤ 0.03 |
| Creep for 30min. | % R.O. | | ≤ 0.03 |
| Return for 30min. | % R.O. | | ≤ 0.03 |
| Resolution | - | | ≤ 1/1000 |
| Division | mV / V | | 0.001 |
| Temperature Effect on | -Zero Value | %/10°C | ≤ 0.05 |
| | -Output Value | %/10°C | ≤ 0.05 |
| Excitation | -Recommended | V | 10 |
| | -Maximum | V | 15 |
| Resistance | -Input | Ω | 420 ± 30 |
| | -Output | Ω | 350 ± 3.5 |
| | -Insulation | MΩ | > 2000 |
| Compensated Temperature Range | °C | | -10 to +40 |
| Operating Temperature Range | °C | | -30 to +80 |
| Material & Plate | - | | Steel / Coating |
| Cable Specification | - | | 5 X 4P X 1.5m (Teflon) |
| Safety Overload | % R.L. | | 150 |

Dimensions

▶ LSW-HM

