

# SB | S-Beam Load Cell



## Features

- ▶ Tensile type
- ▶ Protecting external shocks with steel covers

## Option

- ▶ Rod end bearing type accessories  
(20 to 500 kgf: M12 x 1.75)  
(1-2tf: M18 x 1.5)

## Application

- ▶ Material tester
- ▶ Tensile testing machine

## Description

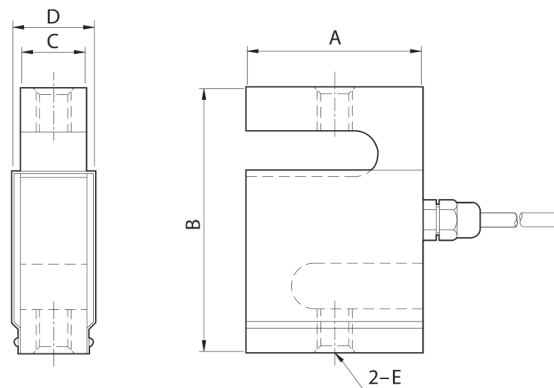
SB is a tensile type load cell of aluminium/steel material. Steel covers are attached to the outside of the load cell to protect against external shocks. Suitable for tensile scale, tensile material testing machines.

## Specifications

Capacity(R.L.)	kgf	20, 50, 75, 100, 200, 250, 500, 1K, 2K	
Rated Output	mV / V	2.0 ± 0.005	
Zero Balance	mV / V	0.0 ± 0.02	
Accuracy Class	-	-	
Non-Linearity	% R.O.	≤0.03	
Hysteresis	% R.O.	≤0.03	
Combined Error	% R.O.	≤0.03	
Repeatability	% R.O.	≤0.01	
Creep for 30min.	% R.O.	≤0.03	
Return for 30min.	% R.O.	≤0.03	
Resolution	-	≤1/3000	
Division	mV / V	0.00067	
Temperature Effect on	-Zero Value	%/10°C	≤0.028
	-Output Value	%/10°C	≤0.015
Excitation	-Recommended	V	10
	-Maximum	V	15
Resistance	-Input	Ω	430 ± 40
	-Output	Ω	350 ± 3.5
	-Insulation	MΩ	> 2000
Compensated Temperature Range	°C	-10 to +40	
Operating Temperature Range	°C	-30 to +80	
Material & Plate	-	Aluminum, Steel	
Cable Specification	-	Ø5.4 x 4P x 3m (Urethane)	
Safety Overload	% R.L.	150	

## Dimensions

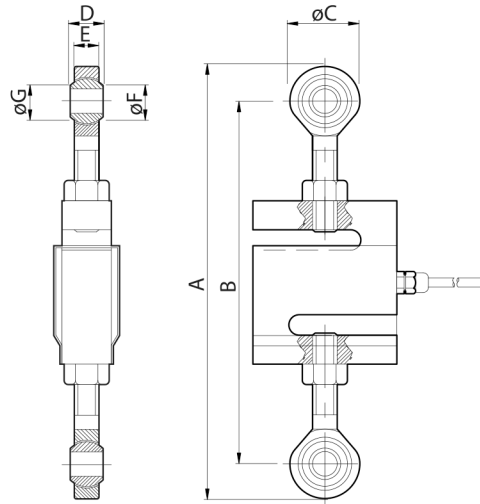
▶ SB



Capa.	A	B	C	D	E	Cable (m)
20~500kgf	70	80	24	32	M12X1.75	3
1~2tf	80	100	30	38	M18 X 1.5	

Accessory Dimensions

► SB (Rod end bearing )



Capa.	A	B	C	D	E	F	G
20~500kgf	211.6 (Max)	177.6 (Max)	34	16	12	12	15.4
1~2tf	308.6 (Max)	248.6 (Max)	60	23	22	18	21.9