

WBKC | Canister Load Cell



Features

- ▶ Compressed type
- ▶ Hermetically sealed structure
- ▶ Designed according to P68

Option

- ▶ Truckscale Accessory SET

Application

- ▶ Hopper, Silo, Tank Scale
- ▶ Truck scale

Description

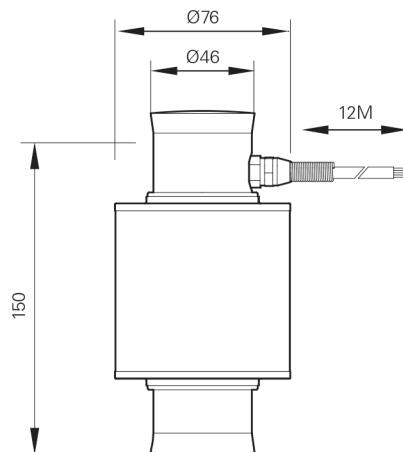
WBKC is a stainless steel Canister type load cell. Compressed type load cells with a sealed structure are suitable for harsh industrial environments such as hoppers, tanks, silos, and truck scales.

Specifications

Capacity(R.L)	tf	10, 20, 25, 30	
Rated Output	mV / V	2.0 ± 0.005	
Zero Balance	mV / V	0 ± 0.02	
Accuracy Class	-	C3	-
Non-Linearity	% R.O.	≤ 0.02	≤ 0.03
Hysteresis	% R.O.	≤ 0.02	≤ 0.03
Combined Error	% R.O.	≤ 0.02	≤ 0.03
Repeatability	% R.O.	≤ 0.01	≤ 0.02
Creep for 30min.	% R.O.	≤ 0.017	≤ 0.03
Return for 30min.	% R.O.	≤ 0.017	≤ 0.03
Resolution	-	≤ 1/5000	≤ 1/3000
Division	mV / V	0.0004	0.00067
Temperature Effect on	-Zero Value -Output Value	%/10°C %/10°C	≤ 0.014 ≤ 0.011
Excitation	-Recommended -Maximum	V V	10 15
Resistance	-Input -Output -Insulation	Ω Ω MΩ	350 ± 3.5, 700 ± 7 350 ± 3.5, 700 ± 7 > 2000
Compensated Temperature Range	°C	-10 to + 40	
Operating Temperature Range	°C	-30 to + 70	
Material & Plate	-	Stainless Steel	
Cable Specification	-	5Ø × 4P or 6P × 12M/15M (Urethane/PVC)	
Safety Overload	% R.L.	150	

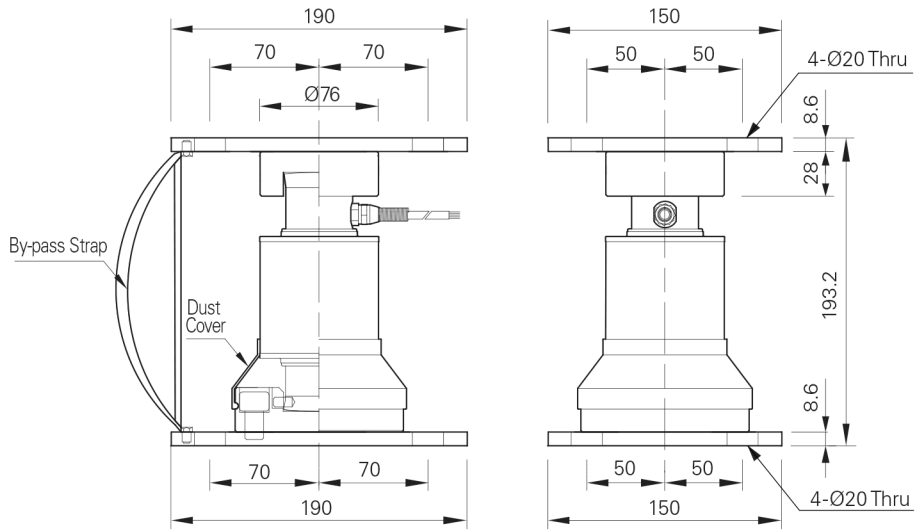
Dimensions

- ▶ WBKC

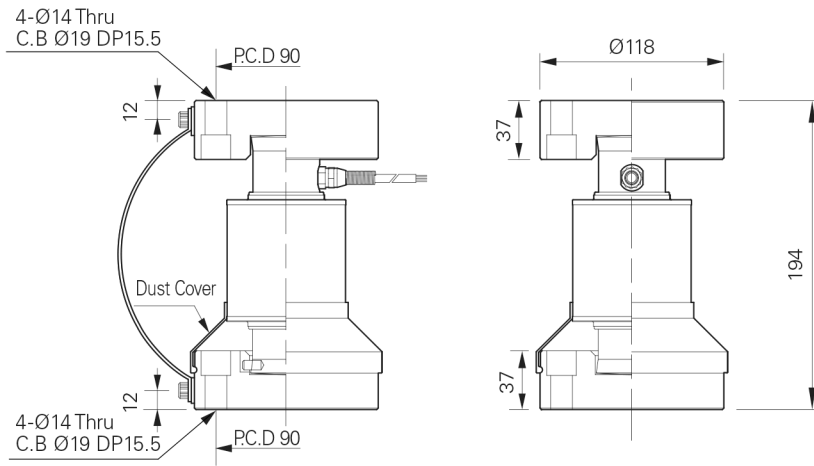


Accessory Dimensions

► WBKC TYPE1



► WBKC TYPE2



► WBKC TYPE3

