

MAS | Multi Axis Load Cell (2Axis, 3Axis)



Description

MAS is a Multi Axis type load cell of aluminum material. Simultaneously measures forces or moments in various directions to show the force and moment of the X, Y and Z axes acting in any direction.

Features

- ▶ 2 to 3-axis configuration of various capacities
- ▶ High accuracy less than 0.5% for each axis
- ▶ Customized specifications (capacity, size)
(Fx, Fy, Fz 3-Axis specifications are 5 ~ 6 Axis size)

Option

- ▶ 2-Axis (MAS101, MAS110)
- ▶ 3-Axis (MAS112, MAS121)

Application

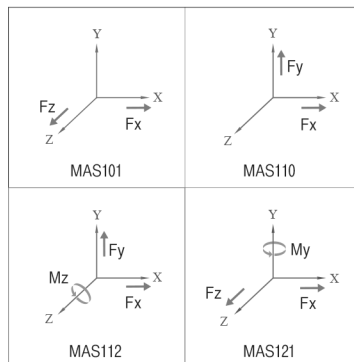
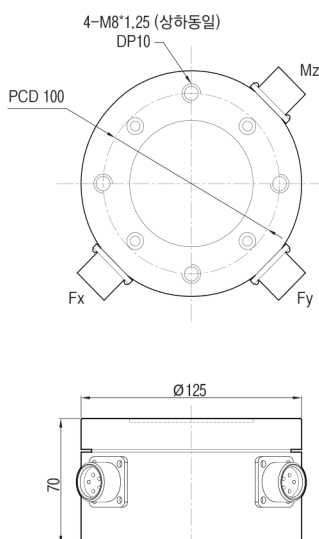
- ▶ Robot joint
- ▶ Wind tunnel test
- ▶ Other Tester

Specifications

Capacity(R.L.)		kgf	2, 5, 10, 20, 50
Rated Output	mV / V		0.5 ± 0.005
Zero Balance	mV / V		0.0 ± 0.02
Accuracy Class	-		-
Non-Linearity	% R.O.		≤0.5% FS for each component force
Hysteresis	% R.O.		≤0.5% FS for each component force
Combined Error	% R.O.		≤0.5% FS for each component force
Temperature Effect on	-Zero Value	%/10°C	± 0.01% FS/°C for each component force
	-Output Value	%/10°C	± 0.06% FS/°C for each component force
Excitation	-Recommended	V	10
	-Maximum	V	15
Resistance	-Input	Ω	350 ± 7
	-Output	Ω	350 ± 7
	-Insulation	MΩ	>2000
Material & Plate	-		aluminum
Cable Specification	-		ø5.4 x 4p x 5m (Urethane)
Safety Overload	% R.L.		150% FS for each component force

Dimensions

▶ MAS 112



Type	Rated Load(Allowable Moment)						
	Fx (kgf)	Fy (kgf)	Fz (kgf)	Mx (kgf·m)	My (kgf·m)	Mz (kgf·m)	
2AXIS	MAS101	2L	2	-	2	-	-
		5L	5	-	5	-	-
		10L	10	-	10	-	-
		20L	20	-	20	-	-
		50L	50	-	50	-	-
MAS110	2L	2	2	-	-	-	
	5L	5	5	-	-	-	
	10L	10	10	-	-	-	
	20L	20	20	-	-	-	
	50L	50	50	-	-	-	

Type	Rated Load (Allowable Moment)						
	Fx (kgf)	Fy (kgf)	Fz (kgf)	Mx (kgf·m)	My (kgf·m)	Mz (kgf·m)	
3AXIS	MAS112	2L	2	2	-	-	0.2
		5L	5	5	-	-	0.5
		10L	10	10	-	-	1
		20L	20	20	-	-	2
		50L	50	50	-	-	5
MAS121	2L	2	-	2	-	0.2	
	5L	5	-	5	-	0.5	
	10L	10	-	10	-	1	
	20L	20	-	20	-	2	
	50L	50	-	50	-	5	