

Model PCL

Ceramic Diaphragm Type Corrosion Proof Pressure Transducer

Description

PCL model is suitable for corrosion resistant environment since it uses ceramic pressure cell and Teflon body. Output of 1~5V or 4~20mA(2Wire), it may be interfaced with various controllers.

Features

- ▶ Built-in amplifier circuit(VDC, mA)
- ▶ Measuring range 0~1MPa
- ▶ 0.5%FS accuracy
- ▶ Piezoresistive ceramic cell
- ▶ PP or PVC, ceramic(Al_2O_3) media-wetted materials

Applications

- ▶ Semiconductor Manufacturing Equipment
- ▶ High-purity Fluids
- ▶ Chemical Process
- ▶ Physics and Chemistry Equipment
- ▶ Waste Disposing Equipment



Specifications

Range

0 ~ 100kPa ... 1MPa (Gauge)

Performance

Accuracy	±0.5%FS(RSS)
Thermal Effect on Zero	±0.06%FS/°C
Thermal Effect on Span	±0.06%FS/°C
Compensated Temperature Range	-10 ~ 70°C
Operating Temperature Range	-20 ~ 80°C

Electrical

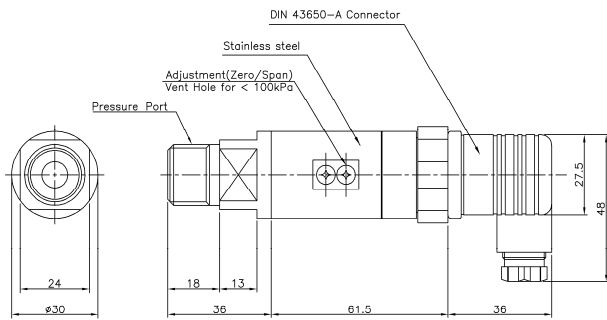
Excitation	11 ~ 28VDC
Output	0~5VDC, 1~5VDC, 0~10VDC, 4~20mA(2, 3Wire)
Electrical Connection	DIN Connector

Physical

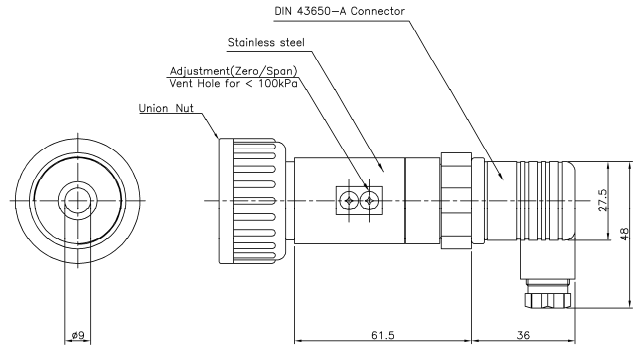
Proof Pressure	150%FS Max.
Burst Pressure	200%FS Min.
Vibration	49.1m/s ² {5G}, 10~500Hz
Shock	490m/s ² {50G}
Pressure port	R(PT)1/2", G(PF)1/2", Union
Media-Wetted Materials	PP or PVC, Ceramic(Al_2O_3 96%), VITON
Weight	Approx. 200g (Sensor Only)

Dimension

▶ Thread Type



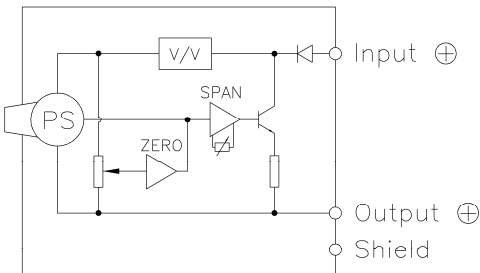
▶ Union Type



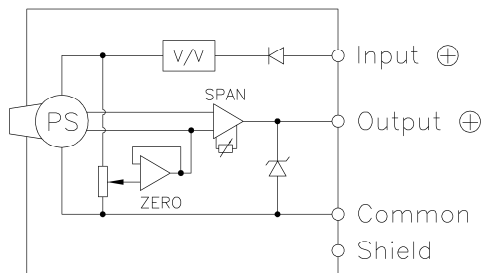
Pin No.	Connections	
	3Wire	2Wire
1	Input ⊕	Input ⊕
2	Common ⊖	Output ⊕
3	Output ⊕	×
⊕	Earth	Earth

Internal Circuit Diagram

▶ 2Wire mA Output Type



▶ 3, 4Wire mA, VDC Output Type



Ordering Information

Model Name		Option	
PCL E 0100 R E I A		A : Normal	
Output		Connecting Methods	
B : 4Wire 0~5V	G : 3Wire 4~20mA	I : DIN 43650-A connector	
C : 3Wire 0~5V	H : 2Wire 4~20mA	Pressure port	
D : 4Wire 1~5V	J : 3Wire 0~10V	E : R(PT)1/2" Q : G(PF)1/2"	
E : 3Wire 1~5V	K : 4Wire 0~10V	P : Union	
F : 4Wire 4~20mA		Pressure Unit	
Pressure Range	XXXX : Pressure	R : kPa M : MPa	
		B : bar K : kgf/cm ²	
		P : psi H : mmHg	
		C : cmH ₂ O	

Sensys SENSOR SYSTEM TECHNOLOGY CO., LTD.

ADD : Rm.5010, Ansan Digital Park, 81, Neungan-ro,
Danwon-gu, Ansan-si, Gyeonggi-do, Korea
TEL : 82-31-310-8910~9
FAX : 82-31-310-8920
http://www.sensys.co.kr
e-mail : master@sensys.co.kr

· Specifications are subject to change without notice.

Copyright © 2016 SENSOR SYSTEM TECHNOLOGY CO., LTD.(20161027)