

Model PLN

Depth and Level Transmitter with Adjustable Range

Description

The PLN model is a pressure-type level transmitter that can measure up to a depth of 350m. Atmospheric compensation is performed using a polyurethane cable with a built-in vent tube. The measurement range can be adjusted from 100% to 30% by setting the DIP switch of the external amplifier box.

Features

- ▶ 100~30% Range Adjustable
- ▶ 4~20mA output
- ▶ Gauge and absolute measurement
- ▶ 0.15%FS accuracy
- ▶ Fully sealed construction
- ▶ Vented polyurethane cable
- ▶ Piezoresistive silicon cell
- ▶ Stainless steel(316L) media-wetted materials

Applications

- ▶ Tank Level Measurement
- ▶ Deep Well Measurement
- ▶ Ship & Marine System
- ▶ Ground & Surface Water Monitoring
- ▶ Geophysical Application
- ▶ Water Supply & Reservoirs

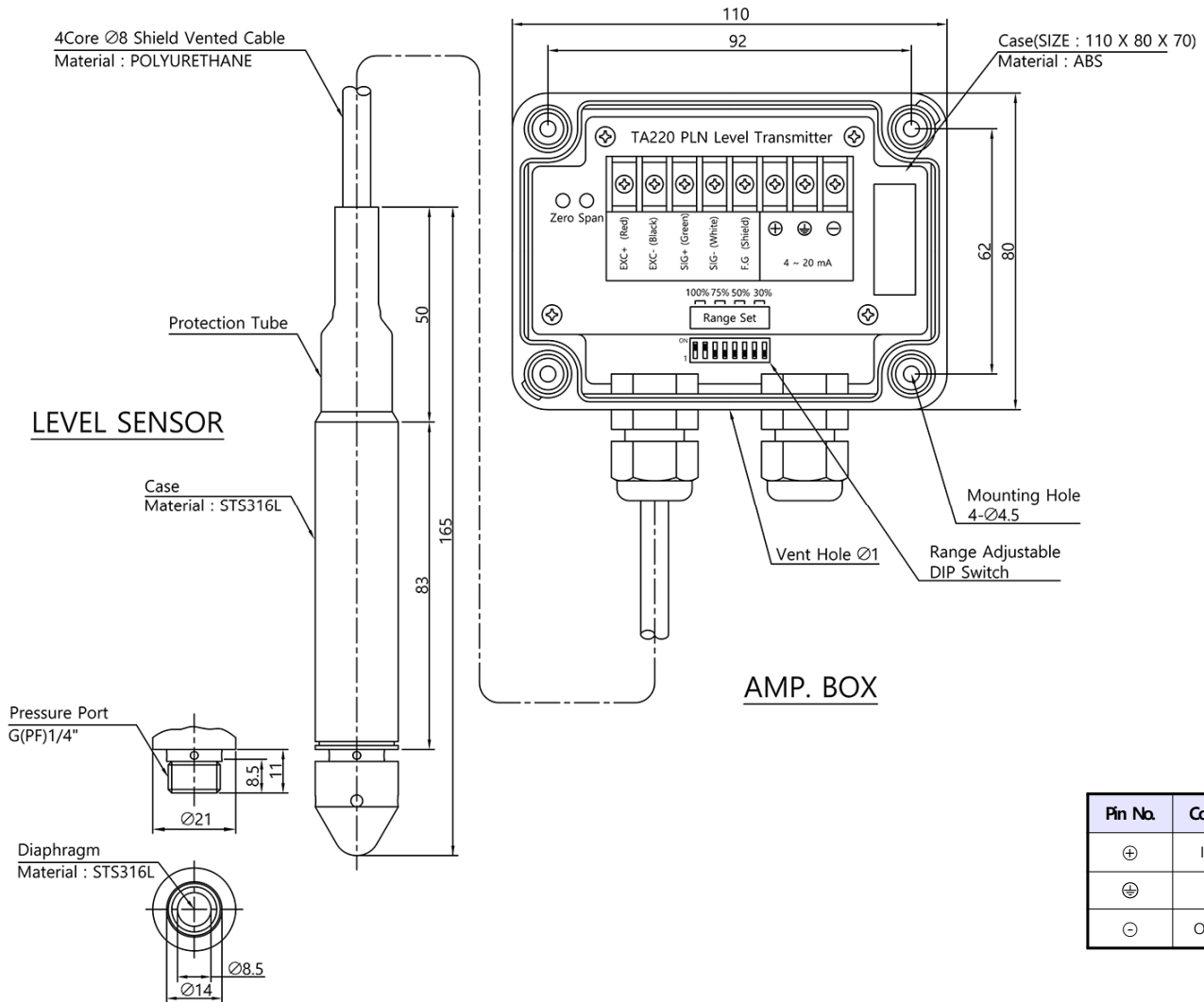


Specifications

Range	0~3.5, 10, 20, 35, 70, 200, 350mH ₂ O (Gauge) - Range Adjustable(100~30%) 0~10, 20, 35, 70, 200, 350mH ₂ O (Absolute) - Range Adjustable(100~30%)
Accuracy	±0.15%FS(RSS) ¹⁾
Thermal Effect on Zero	±0.03%FS/°C ¹⁾
Thermal Effect on Span	±0.03%FS/°C ¹⁾
Compensated Temperature Range	0 ~ 70°C
Operating Temperature Range	-20 ~ 80°C
Excitation	11 ~ 28VDC
Output	4~20mA(2Wire)
Electrical Connection	AMP. BOX / Cable Gland
Proof Pressure	300%FS Max.
Burst Pressure	400%FS Min.
Media-Wetted Materials	Stainless Steel 316L
Protection	Sensor : IP68, AMP BOX : P67

¹⁾ Accuracy and Thermal Effect is based on 100% range.(Accuracy is inversely proportional to the pressure range adjustment rate.)

Dimension



Ordering Information

