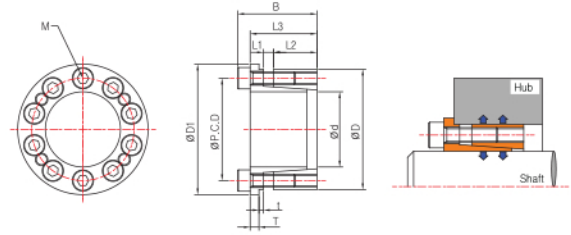




Features

MAS is available for the shaft with a narrow diameter
Type of rust protection as plated body and bolt Centering function is available.
Decision on position is free.
It has a shaft on the hub unmovable when assembled.
Safe and precise fitting system.



Usage

Gear, Pulley, Sprocket, Cam, etc.

Specifications

Surface roughness : Rt max 16µm
Processing tolerance(Max) : Shaft h7, Hub H7

MAS d×D	Dimension								Tightening screw			Transfer		Surface pressure		Mass	Moment of inertia
	D1	P.C.D	t	T	L1	L2	L3	B	Size	Quantity	Tightening torque	Thrust	Torque	Shaft	Hub		
mm	mm	mm	mm	mm	mm	mm	mm	mm	M	Qty	N · m	kN	N · m	Mpa	Mpa	kg	kg · m ²
5×16	18.5	11.7	1.2	1.8	2.0	8.0	13.0	16.0	M3×10	4	1.9	2.1	5	254	67	0.018	6.27×10 ⁻⁷
6×19	21.5	14.0	1.3	2.0	2.0	9.0	14.3	18.3	M4×12	4	3.9	3.5	10	323	84	0.026	1.36×10 ⁻⁶
6.35×20	22.5	14.35	1.3	2.0	2.0	9.0	14.3	18.3	M4×12	4	3.9	3.5	10	307	79	0.029	1.66×10 ⁻⁶
8×21	23.5	15.40	1.3	2.0	2.0	9.3	14.6	18.6	M4×12	4	3.9	4.1	17	244	92	0.035	2.03×10 ⁻⁶
10×23	25.5	17.50	1.3	2.0	2.0	9.5	14.8	18.8	M4×12	4	3.9	3.9	20	192	77	0.040	2.92×10 ⁻⁶
11×24	26.5	18.40	1.3	2.0	3.0	9.5	15.8	19.8	M4×12	4	3.9	4.0	23	174	73	0.045	3.45×10 ⁻⁶
12×26	28.5	20.20	1.5	2.5	3.5	10.5	18.0	22.0	M4×15	6	3.9	5.9	37	239	91	0.053	5.37×10 ⁻⁶
14×28	30.5	22.20	1.5	2.5	3.5	10.5	18.0	22.0	M4×15	6	3.9	7.2	51	204	84	0.061	7.07×10 ⁻⁶
15×29	31.5	23.20	1.5	2.5	3.5	11.5	19.0	23.0	M4×15	6	3.9	7.2	55	205	90	0.066	8.58×10 ⁻⁶
16×30	33.0	24.20	1.6	2.5	3.5	12.0	19.6	23.6	M4×15	6	3.9	7.3	59	193	87	0.075	1.02×10 ⁻⁵
17×31	33.5	25.20	1.6	2.5	3.5	12.5	20.1	24.1	M4×15	8	3.9	8.9	77	205	97	0.075	1.17×10 ⁻⁵
18×32	34.5	26.20	1.6	2.5	3.5	12.5	20.1	24.1	M4×15	8	3.9	8.9	81	166	93	0.080	1.31×10 ⁻⁵
19×33	35.5	27.20	1.6	2.5	3.5	12.5	20.1	24.1	M4×15	8	3.9	8.9	86	184	91	0.081	1.46×10 ⁻⁵
20×38	42.0	30.80	1.8	3.0	4.0	15.3	24.1	29.1	M5×18	8	8.8	18.3	183	213	97	0.144	3.70×10 ⁻⁵
22×40	44.0	32.80	1.8	3.0	4.0	15.3	24.1	29.1	M5×18	8	8.8	18.3	201	193	92	0.165	4.42×10 ⁻⁵
24×42	46.0	34.80	1.8	3.0	4.0	16.3	25.1	30.1	M5×18	8	8.8	21.0	252	121	105	0.180	5.45×10 ⁻⁵
25×43	47.0	35.80	1.8	3.0	4.0	17.3	26.1	31.1	M5×18	8	8.8	21.1	264	212	102	0.188	6.15×10 ⁻⁵
28×46	50.0	38.80	1.8	3.5	4.0	17.3	26.6	31.6	M5×18	10	8.8	21.1	295	212	107	0.195	8.15×10 ⁻⁵
30×48	52.0	40.80	1.8	3.5	4.0	17.3	26.6	31.6	M5×18	10	8.8	26.4	396	198	102	0.208	9.45×10 ⁻⁵
32×50	54.0	42.80	1.8	3.5	4.0	18.3	27.6	32.6	M5×18	10	8.8	26.4	423	192	103	0.219	1.14×10 ⁻⁴
35×57	62.0	48.40	2.0	4.0	4.5	19.5	30.0	36.0	M6×20	8	15.7	31.3	548	207	105	0.325	2.12×10 ⁻⁴
38×60	65.0	51.40	2.0	4.0	4.5	20.0	30.5	36.5	M6×20	10	15.7	39.0	741	208	110	0.362	2.62×10 ⁻⁴
40×62	67.0	53.40	2.0	4.0	4.5	20.5	31.0	37.0	M6×20	10	15.7	39.0	779	202	110	0.380	3.00×10 ⁻⁴
42×64	69.0	55.40	2.0	4.0	4.5	20.5	31.0	37.0	M6×20	10	15.7	39.2	823	192	106	0.405	3.32×10 ⁻⁴
45×67	72.0	58.40	2.0	4.0	4.5	21.0	31.5	37.5	M6×20	10	15.7	39.2	882	184	104	0.435	3.95×10 ⁻⁴
48×70	75.0	61.40	2.0	4.5	4.5	21.0	32.0	38.0	M6×20	12	15.7	46.5	1,117	206	118	0.460	4.75×10 ⁻⁴
50×72	77.0	63.40	2.0	4.5	4.5	21.5	32.5	38.5	M6×20	14	15.7	54.4	1,362	202	119	0.485	5.35×10 ⁻⁴